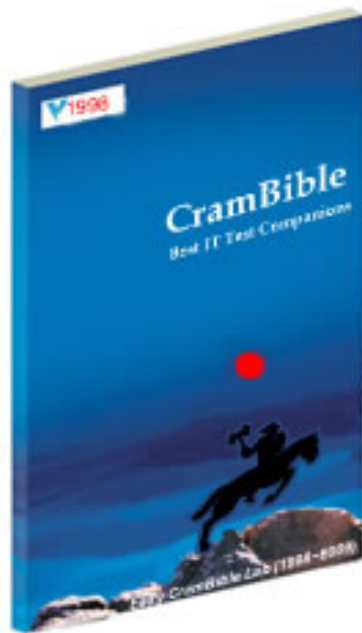


# Easy CramBible Lab



**70-683**

**TS: Windows 7,  
Preinstalling for OEMs  
(English)**

**\*\* Single-user License \*\***

This copy can be only used by yourself for educational purposes.

**Web:** <http://www.crambible.com/>

**E-mail:** [web@crambible.com](mailto:web@crambible.com)

**Important Note****Please Read Carefully****Study Tips**

This product will provide you questions and answers along with carefully compiled and written by our experts. Try to understand the concepts behind the questions instead of cramming the questions.

Go through the entire document at least twice so that you make sure that you are not missing anything.

**Latest Version**

We are constantly reviewing our products. New material is added and old material is revised. Free updates are available for 90 days after the purchase. You should check your member zone at CramBible an update 3-4 days before the scheduled exam date.

Here is the procedure to get the latest version:

1. Go to [www.CramBible.com](http://www.CramBible.com)
2. Click on Member zone/Log in
3. The latest versions of all purchased products are download from here. Just click the links.

For most updates, it is enough just to print the new questions at the end of the new version, not the whole document.

**Feedback**

Feedback on specific questions should be send to [web@CramBible.com](mailto:web@CramBible.com). You should state: Exam number and version, question number, and login ID.

Our experts will answer your mail promptly.

**Copyright**

Each pdf file contains a unique serial number associated with your particular name and contact information for security purposes. So if we find out that a particular pdf file is being distributed by you, CramBible reserves the right to take legal action against you according to the International Copyright Laws.

---

**THE TOTAL NUMBER OF QUESTIONS IS 75****QUESTION NO: 1**

You have a Windows 7 image. You mount the image, add additional files to the image, and then successfully unmount the image. You notice that the additional files are not in the image. You need to ensure that the additional files are saved in the image. What should you do?

- A. Run imagex.exe and specify the /mount parameter.
- B. Run imagex.exe and specify the /commit parameter.
- C. Run dism.exe and specify the /scratchdir parameter.
- D. Run dism.exe and specify the /cleanup-wim parameter.

**ANSWER: B**

**QUESTION NO: 2**

You are preparing a Windows 7 image. You install several out-of-box drivers. You plan to generalize the image, and then deploy the image to computers that have the exact same hardware as the reference computer. You need to ensure that when the image is deployed, that hardware devices are not re-detected during the specialize configuration pass. What should you do before you generalize the computer?

- A. Set the DriverPaths value in the Oobe.xml file.
- B. Set the DriverPaths value in the Unattend.xml file.
- C. Set the PersistAllDeviceInstalls value in the Oobe.xml file.
- D. Set the PersistAllDeviceInstalls value in the Unattend.xml file.

**ANSWER: D**

**QUESTION NO: 3**

You prepare a Windows 7 image. You need to ensure that the system clock is

automatically set to the Central Time (UTC -6:00) time zone when the image is deployed. Your solution must prevent time zone customizations during Windows Welcome. What should you do?

- A. On the reference computer, modify the Time Zone. Generalize and capture the image.
- B. Generalize and capture the image. Create an Oobe.xml file that specifies the time zone.
- C. Generalize and capture the image. Create a Winpeshl.ini file that specifies the time zone.
- D. On the reference computer, run Dism.exe and specify the /set-timezone parameter. Generalize and capture the image.

**ANSWER: B**

**QUESTION NO: 4**

You deploy a generalized image of Windows 7 to a computer. You start the computer in audit mode. You need to ensure that Windows Welcome runs when you restart the computer. What should you do?

- A. Start the computer, and then press F12.
- B. Start the computer, and then press CTRL+SHIFT+F3.
- C. Run Sysprep.exe and specify the /oobe parameter.
- D. Run Dism.exe and specify the /cleanup-image parameter.

**ANSWER: C**

**QUESTION NO: 5**

You mount a Windows 7 image. You need to add a text file to the image. Which tool should you use?

- A. Dism.exe
- B. ImageX.exe

- C. Windows Explorer
- D. Windows System Image Manager

**ANSWER: C**

**QUESTION NO: 6**

You deploy a generalized image on a computer. You need to start Windows 7 on the computer. Your solution must prevent Windows Welcome from completing. What should you do?

- A. Start the computer, and then press SHIFT+F10.
- B. Start the computer, and then press CTRL+SHIFT+F3.
- C. Start the computer from the Windows 7 installation media, and then select Repair computer.
- D. Start the computer from Windows PE, and then run Dism.exe and specify the /add-package parameter.

**ANSWER: B**

**QUESTION NO: 7**

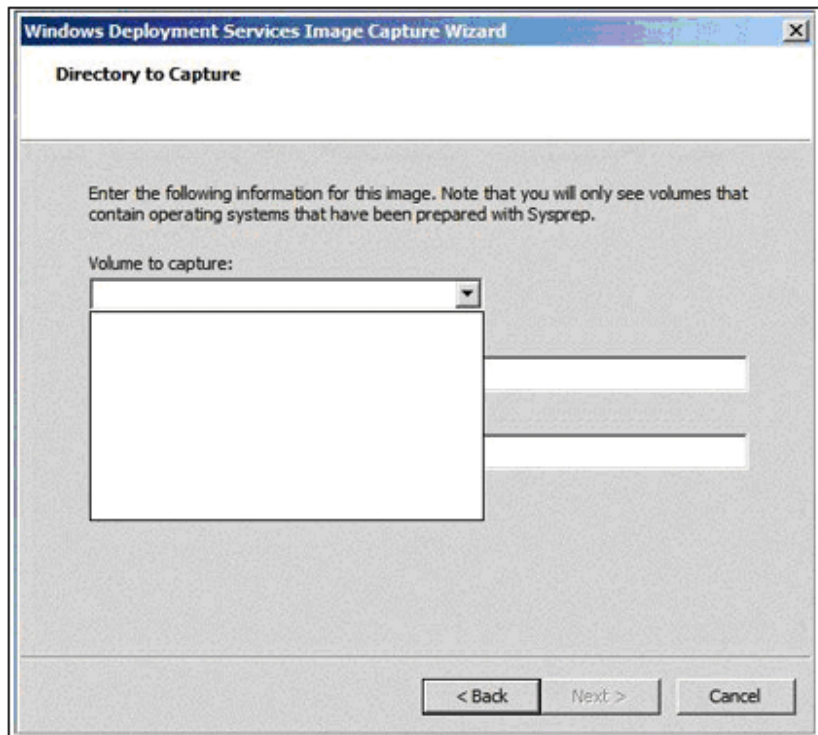
You attempt to capture an image to a Windows Deployment Services (WDS) server as shown in the exhibit. (Click the Exhibit button.) You need to capture the image to the WDS server. What should you do?

- A. Start the reference computer from Windows Preinstallation Environment (Windows PE), and then run sysprep.exe /audit. Restart the computer by using Pre-Boot execution Environment (PXE).
- B. Start the reference computer from Windows Preinstallation Environment (Windows PE), and then run sysprep.exe /generalize. Restart the computer by using Pre-Boot execution Environment (PXE).
- C. Start Windows 7 on the reference computer, and then run sysprep.exe /audit. Restart

the computer by using Pre-Boot execution Environment (PXE).

D. Start Windows 7 on the reference computer, and then run `sysprep.exe /generalize`.

Restart the computer by using Pre-Boot execution Environment (PXE).



**ANSWER: D**

**QUESTION NO: 8**

You have a computer that runs Windows 7. You start a capture of the computer to an image and get the following error message: The process cannot access the file because it is being used by another process. You need to create an image of the computer. What should you do before you capture the image?

- A. Disable the paging file.
- B. Stop the Windows Search service.
- C. Start the command prompt by using elevated privileges.