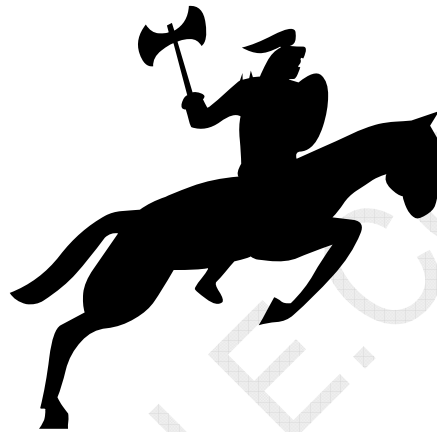


Easy CramBible Lab



642-812

**BCMSN - Building Converged
Cisco Multilayer Switched Networks**

**** Single-user License ****

This copy can be only used by yourself for educational purposes

Web: <http://www.crambible.com/>

E-mail: web@crambible.com

Important Note
Please Read Carefully**Study Tips**

This product will provide you questions and answers along with detailed explanations carefully compiled and written by our experts. Try to understand the concepts behind the questions instead of cramming the questions.

Go through the entire document at least twice so that you make sure that you are not missing anything.

Latest Version

We are constantly reviewing our products. New material is added and old material is revised. Free updates are available for 90 days after the purchase. You should check your member zone at CramBible an update 3-4 days before the scheduled exam date.

Here is the procedure to get the latest version:

1. Go to www.CramBible.com
2. Click on Member zone/Log in
3. The latest versions of all purchased products are download from here. Just click the links.

For most updates, it is enough just to print the new questions at the end of the new version, not the whole document.

Feedback

Feedback on specific questions should be send to web@CramBible.com. You should state: Exam number and version, question number, and login ID.

Our experts will answer your mail promptly.

Copyright

Each pdf file contains a unique serial number associated with your particular name and contact information for security purposes. So if we find out that a particular pdf file is being distributed by you, CramBible reserves the right to take legal action against you according to the International Copyright Laws.

THE TOTAL NUMBER OF QUESTIONS IS 342

QUESTION NO: 1 Multiple Spanning Tree (MST) is an IEEE standard inspired from the Cisco proprietary Multiple Instances Spanning Tree Protocol (MISTP) implementation. Which three statements about the Multiple Spanning Tree (MST) protocol (IEEE 802.1s) are true? (Choose three.)

- A. To verify the MST configuration, the show pending command can be used in MST configuration mode.
- B. When RSTP and MSTP are configured, UplinkFast and BackboneFast must also be enabled.
- C. Enabling MST with the spanning-tree mode mst global configuration command also enables RSTP.
- D. An MST region is a group of MST switches that appear as a single virtual bridge to adjacent CST and MST regions.

Answer: A, C, D

QUESTION NO: 2 You work as a network technician at crambible.com. A client is searching for an access point (AP). What is the correct process order that the client and access point go through to create a connection?

- A. probe request/response, authentication request/response, association request/response
- B. association request/response, probe request/response, authentication request/response
- C. association request/response, authentication request/response, probe request/response
- D. probe request/response, association request/response, authentication request/response

Answer: A

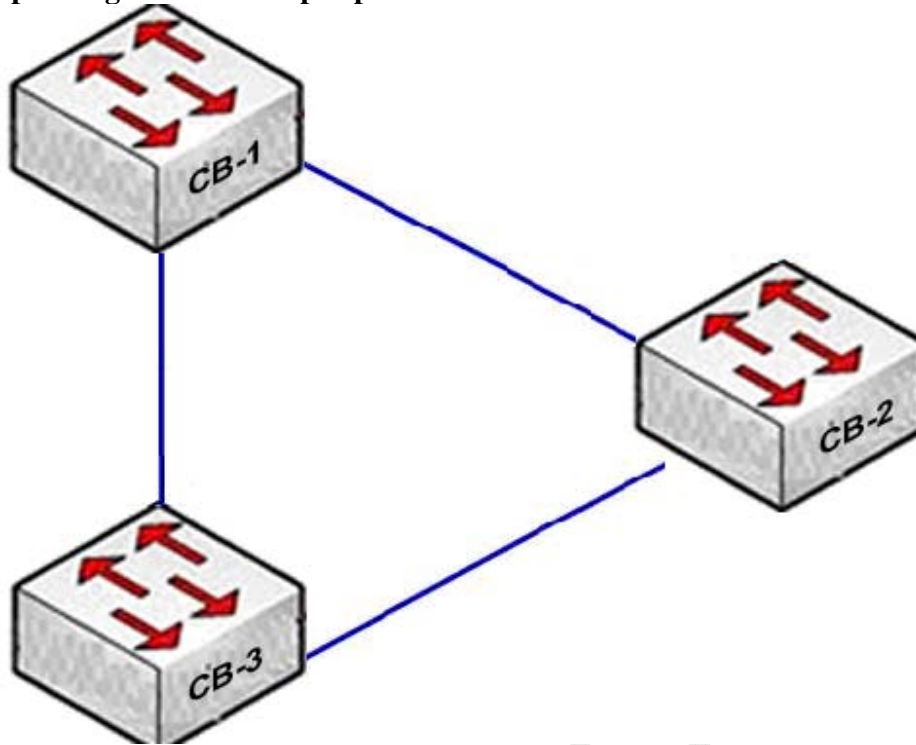
QUESTION NO: 3 Which three features are part of the Cisco Compatible Extensions program? (Choose three.)

- A. mobility
- B. accounting
- C. security
- D. VLAN and QoS

Answer: A, C, D

QUESTION NO: 4 Refer to the exhibit. Switch CB-S2 contains the default configuration. Switches CB-S1 and CB-S3 both have had the command

spanning-tree mode rapid-pvst issued on them. What will be the result?



- A. Switches CB-S1 and CB-S3 will be able to exchange traffic but neither will be able to exchange traffic with Switch CB-S2
- B. IEEE 802.1D and IEEE 802.1w are incompatible. All three switches must use the same standard or no traffic will pass between any of the switches.
- C. Switches CB-S1, CB-S2, and CB-S3 will be able to pass traffic between themselves.
- D. Switches CB-S1, CB-S2, and CB-S3 will be able to pass traffic between themselves. However, if there is a topology change, Switch CB-S2 will not receive notification of the change.

Answer: C

QUESTION NO: 5 What are two methods of mitigating MAC address flooding attacks? (Choose two.)

- A. Implement port security.
- B. Place unused ports in a common VLAN.
- C. Implement DHCP snooping.
- D. Implement VLAN access maps.

Answer: A, D

QUESTION NO: 6 Which two most important aspects should be taken into consideration when designing the core layer in a large network? (Choose two.)

- A. A low number of Layer 3 routing peers
- B. Switches that can efficiently forward traffic, even when every uplink is at 100% capacity
- C. High port density of high-speed ports
- D. Low cost

Answer: B, C

QUESTION NO: 7 To save on intra-office call costs, the crambible network has implemented VOIP at all their locations. Which statement is true about IP telephony calls?

- A. The voice carrier stream uses H.323 to set up, maintain, and tear down call endpoints.
- B. A Voice over IP (VoIP) packet consists of the voice payload, IP header, TCP header, RTP header, and Layer 2 link header.
- C. Call control signaling uses Real-Time Transport Protocol (RTP) packets that contain actual voice samples.
- D. The sum of bandwidth necessary for each major application, including voice, video, and data, should not exceed 75 percent of the total available bandwidth for each link.

Answer: D

QUESTION NO: 8 Examine the router output below. Which two items are correct? (Choose two.)

CramBible # show standby

Ethernet0/1 - Group 1

State is Active

2 state changes, last state change 00:30:59

Virtual IP address is 10.1.0.21

Secondary virtual IP address 10.1.0.21

Active virtual MAC address is 0004.4d82.7981

Local virtual MAC address is 0004.4d82.7981 (bia)

Hello time 4 sec, hold time 12 sec

Next hello sent in 1.412 secs

Preemption enabled, min delay 50 sec, sync delay 40 sec

Active router is local

Standby router is 10.1.0.6, priority 75 (expires in 9.184 sec)

Priority 95 (configured 120)

Tracking 2 objects, 0 up

Down Interface Ethernet0/2, pri 15

Down Interface Ethernet0/3

IP redundancy name is "HSRP1" , advertisement interval is 34 sec

- A. When Ethernet 0/3 of Router CramBible comes back up, the priority will become 105.
- B. If Ethernet 0/2 goes down, the standby router will take over.
- C. Router CramBible will assume the active state if its priority is the highest.
- D. The local IP address of Router CramBible is 10.1.0.6.

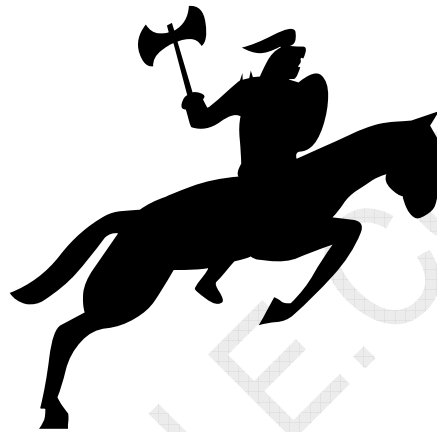
Answer: A, C

QUESTION NO: 9 CramBible is implementing 802.1X in order to increase network security. In the use of 802.1X access control, which three protocols are allowed through the switch port before authentication takes place? (Choose three.)

- A. CDP
- B. STP
- C. TACACS+
- D. EAP-over-LAN

Answer: A, B, D

Easy CramBible Lab



642-873

Designing Cisco Network Service Architectures Exam

**** Single-user License ****

This copy can be only used by yourself for educational purposes

Web: <http://www.crambible.com/>

E-mail: web@crambible.com

Important Note
Please Read Carefully**Study Tips**

This product will provide you questions and answers along with detailed explanations carefully compiled and written by our experts. Try to understand the concepts behind the questions instead of cramming the questions.

Go through the entire document at least twice so that you make sure that you are not missing anything.

Latest Version

We are constantly reviewing our products. New material is added and old material is revised. Free updates are available for 90 days after the purchase. You should check your member zone at CramBible an update 3-4 days before the scheduled exam date.

Here is the procedure to get the latest version:

1. Go to www.CramBible.com
2. Click on Member zone/Log in
3. The latest versions of all purchased products are download from here. Just click the links.

For most updates, it is enough just to print the new questions at the end of the new version, not the whole document.

Feedback

Feedback on specific questions should be send to web@CramBible.com. You should state: Exam number and version, question number, and login ID.

Our experts will answer your mail promptly.

Copyright

Each pdf file contains a unique serial number associated with your particular name and contact information for security purposes. So if we find out that a particular pdf file is being distributed by you, CramBible reserves the right to take legal action against you according to the International Copyright Laws.

THE TOTAL NUMBER OF QUESTIONS IS 130

QUESTION NO: 1 You are the network consultant from crambible.com. Please point out which Layer 2 access designs does not support VLAN extensions?

- A. FlexLinks
- B. loop-free U
- C. looped square
- D. looped triangle

Answer: B

QUESTION NO: 2 Which typical enterprise campus requirement ensures that the network supports the required applications and that data flows within the required time frames?

- A. availability
- B. performance
- C. functionality
- D. manageability

Answer: C

QUESTION NO: 3 You are the Cisco Network Designer in crambible.com. Which of these is a Layer 2 transport architecture that provides packet-based transmission optimized for data based on a dual ring topology?

- A. Dynamic Trunking Protocol
- B. Resilient Packet Ring
- C. Synchronous Digital Hierarchy
- D. Coarse Wave Division Multiplexing

Answer: B

QUESTION NO: 4 What two choices can you make when redundancy is required from a branch office to a regional office? (Choose two.)

- A. multiple Frame Relay PVCs
- B. dual Wan links to the regional office
- C. dual Wan links to another branch office
- D. single links - one to the regional office and one to another branch office

Answer: B, D

QUESTION NO: 5 Which one is not the feature of the Cisco Unified Wireless Network architecture?

- A. network unification
- B. remote access
- C. mobility services
- D. network management

Answer: B

QUESTION NO: 6 What type of Call Admission control in CallManager allows for limits to the bandwidth consumed by active calls?

- A. regions
- B. partitions
- C. locations
- D. device Pools

Answer: C

QUESTION NO: 7 Which two of these are correct regarding the recommended practice for distribution layer design based on the following configuration?

QUESTION NO: 9 Jitter is an unwanted variation of one or more characteristics of a periodic signal in electronics and telecommunications and _____ refers to call issues that cause variations in timing or time of arrival

- A. echo
- B. jitter
- C. packet loss
- D. digitized sampling

Answer: B

QUESTION NO: 10 Which three components are part of the Intelligent Network Services provided by the Cisco AVVID framework? (Choose three.)

- A. IP telephony
- B. security
- C. IP multicasting
- D. QoS

Answer: B, C, D

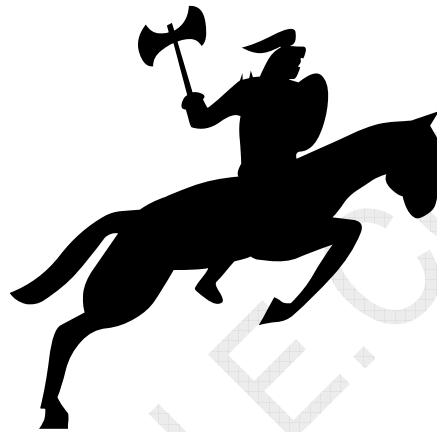
QUESTION NO: 11 Cisco IDS sensors form the eyes and ears of your Cisco network intrusion detection system. Placing sensors correctly throughout your network is crucial to successfully implementing your Cisco intrusion detection system. Which two of these are characteristics of an IDS sensor? (Choose two.)

- A. has a permissive interface that is used to monitor networks
- B. is an active device in the traffic path
- C. passively listens to network traffic
- D. has a promiscuous interface that is used to monitor the network

Answer: C, D

QUESTION NO: 12 Which three best practices should be implemented at the

Easy CramBible Lab



642-901

BSCI - Building Scaleable Cisco Internetworks

**** Single-user License ****

This copy can be only used by yourself for educational purposes

Web: <http://www.crambible.com/>

E-mail: web@crambible.com

Important Note
Please Read Carefully**Study Tips**

This product will provide you questions and answers along with detailed explanations carefully compiled and written by our experts. Try to understand the concepts behind the questions instead of cramming the questions.

Go through the entire document at least twice so that you make sure that you are not missing anything.

Latest Version

We are constantly reviewing our products. New material is added and old material is revised. Free updates are available for 90 days after the purchase. You should check your member zone at CramBible an update 3-4 days before the scheduled exam date.

Here is the procedure to get the latest version:

1. Go to www.CramBible.com
2. Click on Member zone/Log in
3. The latest versions of all purchased products are download from here. Just click the links.

For most updates, it is enough just to print the new questions at the end of the new version, not the whole document.

Feedback

Feedback on specific questions should be send to web@CramBible.com. You should state: Exam number and version, question number, and login ID.

Our experts will answer your mail promptly.

Copyright

Each pdf file contains a unique serial number associated with your particular name and contact information for security purposes. So if we find out that a particular pdf file is being distributed by you, CramBible reserves the right to take legal action against you according to the International Copyright Laws.

THE TOTAL NUMBER OF QUESTIONS IS 353

QUESTION NO: 1 You need to configure EIGRP on a new crambible router. Which command should you issue first to configure EIGRP for IP?

- A. ip eigrp routing
- B. router eigrp process-id
- C. ip eigrp autonomous-system-number
- D. router eigrp autonomous-system-number

Answer: D

QUESTION NO: 2 Which two descriptions about 6to4 tunneling are correct? (Choose two.)

- A. 2002::/48 is the address range specifically assigned to 6to4.
- B. Prepending 0x2002 with the IPv4 address creates an IPv6 address that is used in 6to4 tunneling.
- C. Prepending a reserved IPv6 code to the hexadecimal representation of 192.168.0.1 facilitates 6to4 tunneling.
- D. Each 6to4 site receives a /48 prefix in a 6to4 tunnel.

Answer: B, D

QUESTION NO: 3 Which option is correct about the implementation of IPv6 in an already existing IPv4 network?

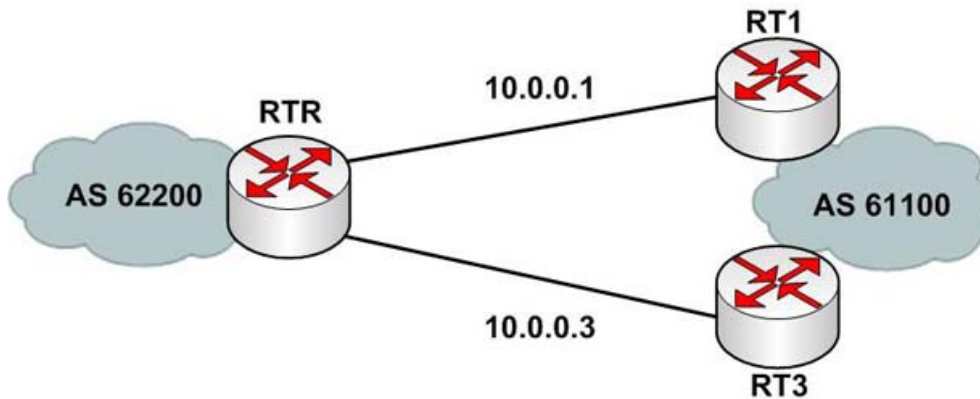
- A. Only OSPF version 3 can be utilized for routing IPv4 and IPv6.
- B. IPv6 can be routed using the same routing protocol versions as IPv4
- C. IPv4 and IPv6 networks can be routed simultaneously.
- D. A router routing for IPv6 and IPv4 must convert IPv4 packets to IPv6 packets to route them.

Answer: C

QUESTION NO: 4 Look at the following statements, study the exhibit carefully. Will redistributed RIP routes from OSPF Area 2 be allowed in Area 1?


```
RTR# debug ip bgp
```

```
*Mar 1 03:27:00.879: %TCP-6-BADAUTH: No MD5 digest from 10.0.0.1:179 to 10.0.0.2:11032
*Mar 1 03:27:00.883: %TCP-6-BADAUTH: No MD5 digest from 10.0.0.1:179 to 10.0.0.2:11032
*Mar 1 03:27:04.311: %TCP-6-BADAUTH: No MD5 digest from 10.0.0.1:11022 to 10.0.0.2:179
*Mar 1 03:27:12.315: %TCP-6-BADAUTH: No MD5 digest from 10.0.0.1:11022 to 10.0.0.2:179
*Mar 1 03:28:39.659: %TCP-6-BADAUTH: Invalid MD5 digest from 10.0.0.5:11026 to 10.0.0.6:179
*Mar 1 03:28:41.659: %TCP-6-BADAUTH: Invalid MD5 digest from 10.0.0.5:11026 to 10.0.0.6:179
```



- A. RTR has a BGP password set but neighbor 10.0.0.5 has an incorrect password set.
- B. RTR has a BGP password set but neighbor 10.0.0.1 has an incorrect password set.
- C. RTR has a BGP password set but neighbor 10.0.0.5 does not.
- D. RTR has a BGP password set but neighbor 10.0.0.1 does not.

Answer: A, D

QUESTION NO: 6 Which one of the following options is the broadcast address for the host address 192.168.190.55/27?

- A. 255.255.190.55
- B. 192.168.190.59
- C. 192.168.190.63
- D. 192.168.190.0

Answer: C

QUESTION NO: 7 The CramBible company wants to configure DHCP on its router,

refer to the exhibit. The DHCP configuration displayed is configured on a CramBible router. Which description is true?

```
ip dhcp pool 1
  network 172.16.1.0/24
  domain-name CramBible.com
  dns-server 172.16.1.102
  netbios-name-server 172.16.1.103
  Default-router 182.16.1.100 172.16.1.101
  lease 30
!
ip dhcp pool 2
  network 172.16.2.0/24
  domain-name CramBible.com
  dns-server 172.16.2.102
  netbios-name-server 172.16.2.103
  default-router 172.16.2.100 172.16.2.101
  lease 30
```

- A. The configuration is invalid because the DHCP options are global configuration commands.
- B. The router will choose which pool to use based upon the interface the DHCP request was received on.
- C. The router will distribute IP addresses from pool 1 until its addresses are exhausted.
- D. The configuration is incomplete until the DHCP pools are bound to the appropriate interface or interfaces.

Answer: B

QUESTION NO: 8 CramBible uses IGMP version 2 in their IP multicast network. How is the designated querier elected in IGMPv2?

- A. The first router to appear on a subnet is designated.
- B. The host with the lowest MAC address on a segment is designated.
- C. The router with the lowest IP address on a subnet is designated.
- D. The host that responds first to the election query is designated.